



**BLACK LIVES
MATTER:
ELIMINATING
RACIAL
INEQUITIES
IN HEALTH**

Black Elected Officials of the
East Bay
June 28, 2017



KIMI WATKINS-TARTT
ALAMEDA COUNTY PUBLIC HEALTH DEPARTMENT

A Vision of Health Equity



Everyone in Alameda County, no matter where you live, how much money you make, or the color of your skin, will have the same opportunities to lead a healthy, fulfilling and productive life.

Racism, Poverty & Place

EAST OAKLAND
LIFE EXPECTANCY

70



OAKLAND HILLS
LIFE EXPECTANCY

85

Compared to Whites in the Oakland Hills,
Blacks in East Oakland had a **15 year difference**
in life expectancy in 2012-2014.

Proportion Living in a High Poverty Neighborhood (where >20% of residents are poor) by Race

1 in 15 White residents live in **high-poverty neighborhoods**, compared to:



1 in 9 Asians



1 in 4 Latinos



1 in 3 Blacks



Compared to people living in affluent neighborhoods of Alameda County, residents of very high poverty neighborhoods are:



2X more likely to **lack access to employment**



Over **4X** more likely to be living in **overcrowded households**



Facing nearly **8X** higher rates of **homicide**



5X more likely to be **locked up as a youth** for overwhelmingly nonviolent offenses

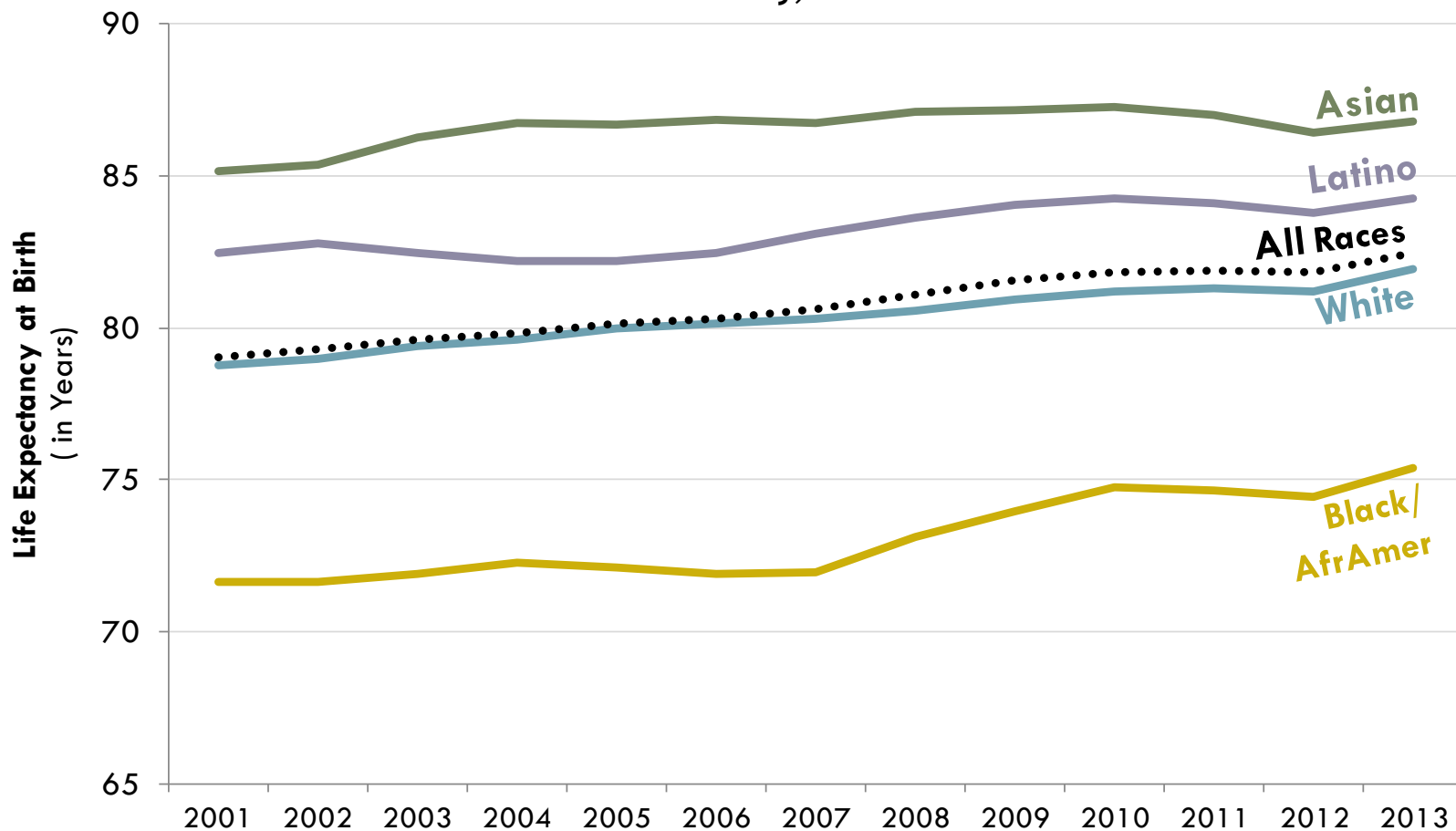


Burdened by a **4X** higher density of **industrial chemical and fuel release sites** that pollute water and soil

Racial Health Inequities

Life Expectancy Trend by Race

Alameda County, 2000-2014*

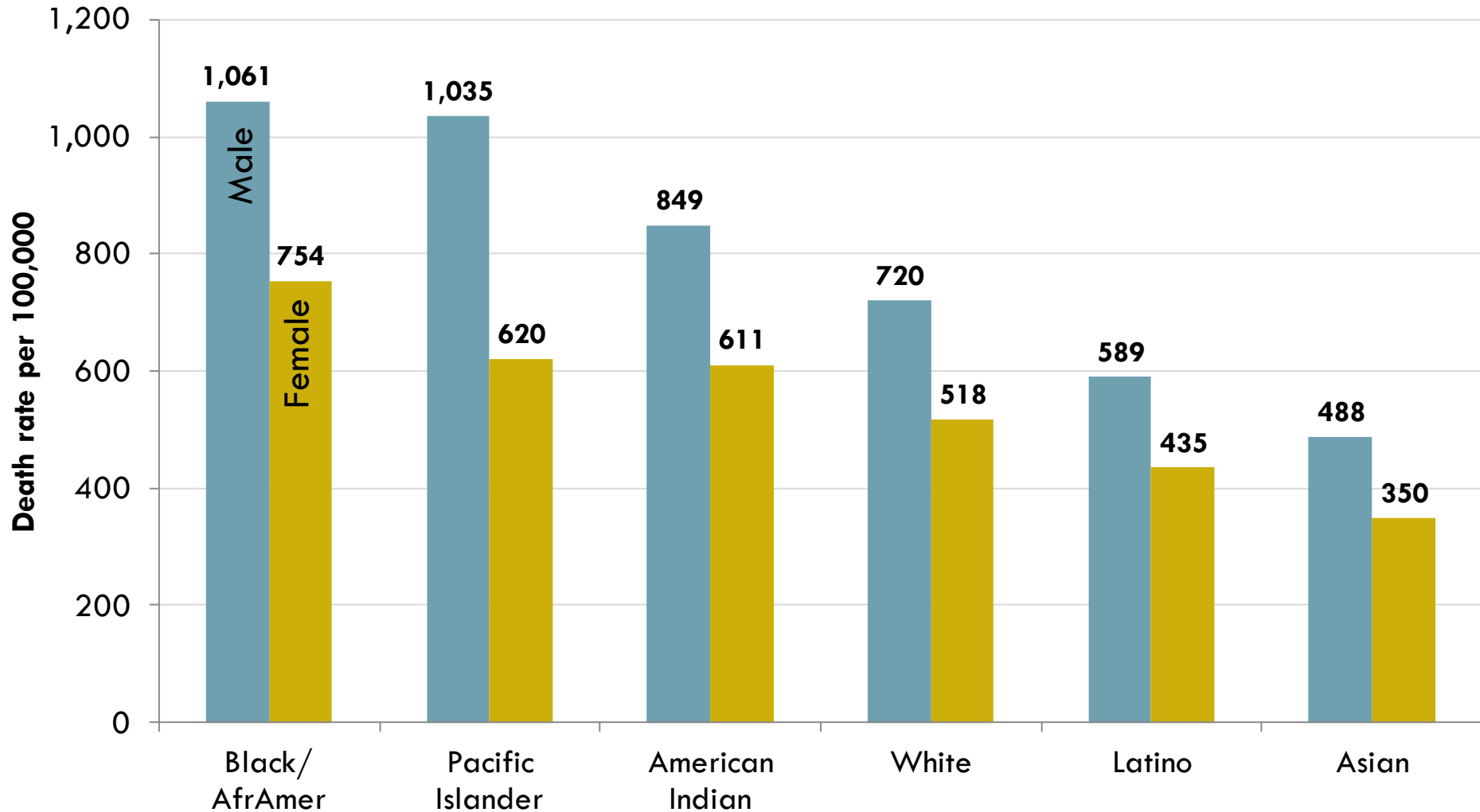


*Trend based on 3-yr rolling average data

Source: Alameda County Vital Statistics files, 2000-2014

All-Cause Mortality Rates by Race and Gender

Alameda County, 2012-2014



Racial Inequities in **Morbidity** & **Mortality**

Alameda County, 2009-2012

↑
INCREASING INEQUITY RATIO
Between African Americans and Lowest Racial Group



Age-Specific All-Cause Mortality Rates by Race

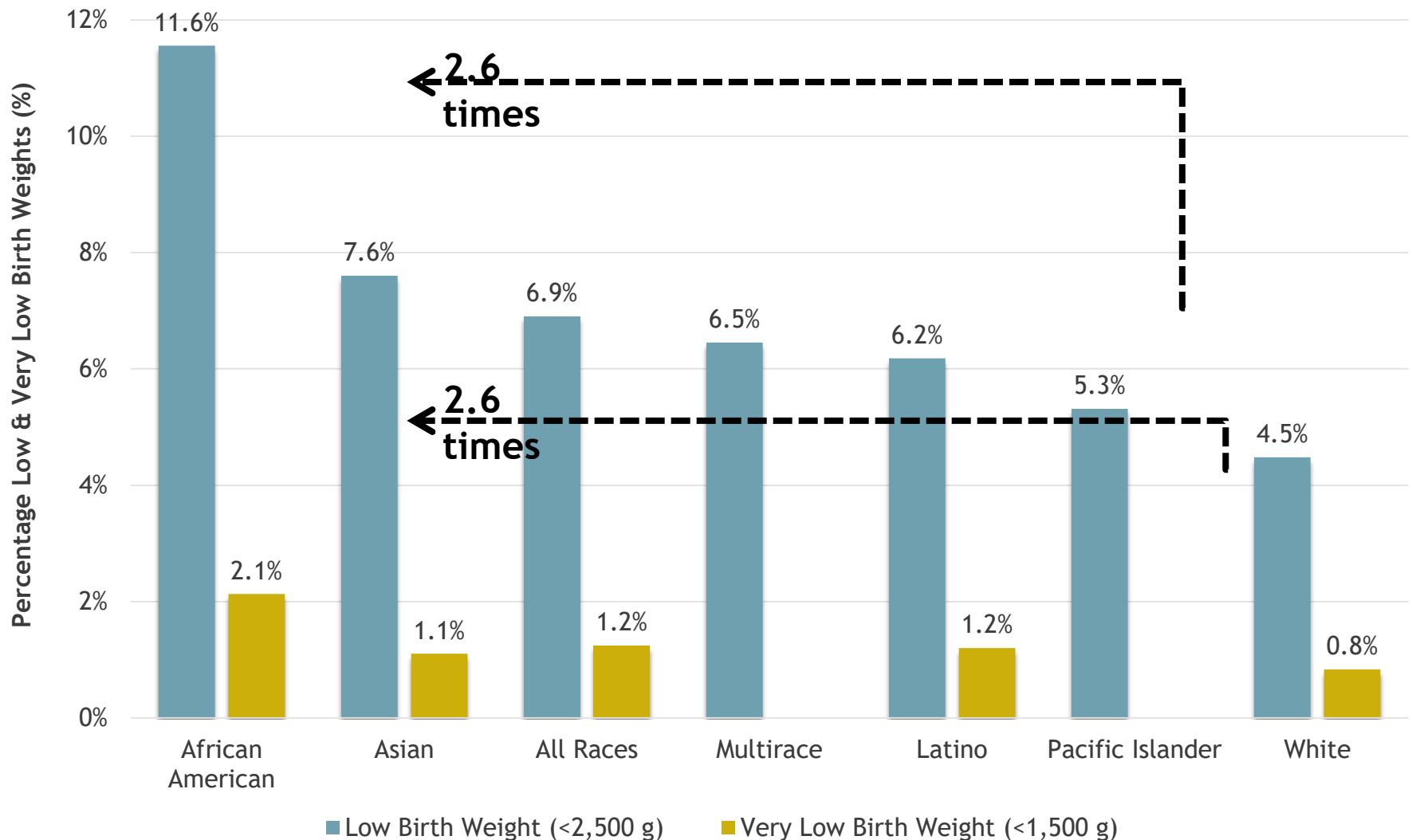
Alameda County, 2012-2014

Age (in yrs)	Black All-Cause Mortality Rate	White All-Cause Mortality Rate	Black vs. White Rate Ratio
<1	971	327	3.0
1-4	42	17	2.5
5-14	16	7	2.3
15-24	166	46	3.6
25-34	194	60	3.2
35-44	272	113	2.4
45-54	534	260	2.1
55-64	1,356	627	2.2
65-74	2,363	1,530	1.5
75-84	5,273	3,971	1.3
85+	12,421	12,954	1.0

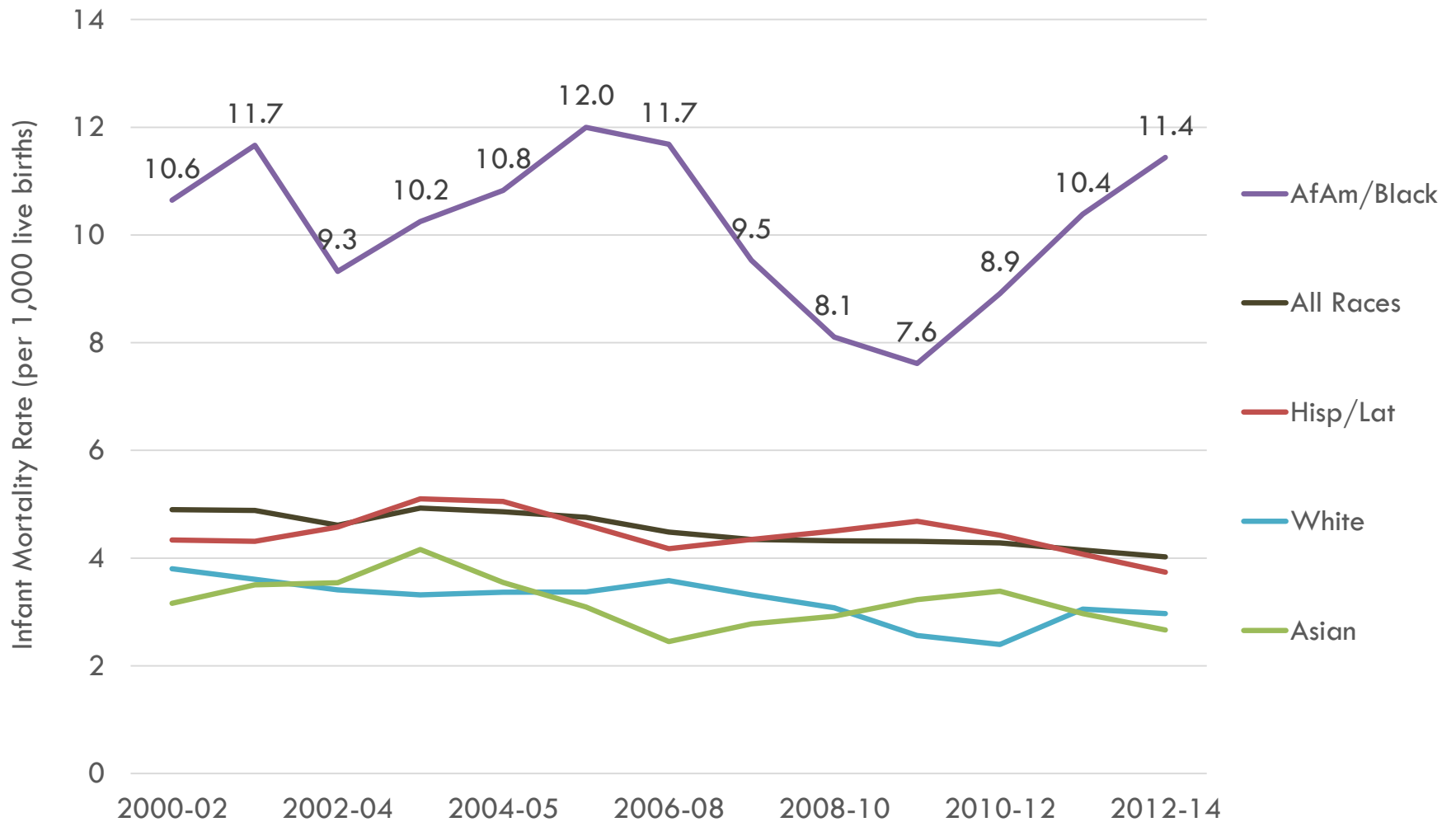
Leading Causes of Death by Age Group in Very High Poverty Neighborhoods

Ages 5-24	% of Deaths	
1. Homicide	59%	} 81% of deaths
2. Unintentional Injuries	22%	
Ages 25-44		} 65% of deaths
1. Homicide	25%	
2. Unintentional Injuries	16%	
3. Cancer	14%	
4. Diseases of Heart	10%	
Ages 45-64		} 60% of deaths
1. Cancer	24%	
2. Diseases of Heart	23%	
3. Unintentional Injuries	7%	
4. Stroke	6%	

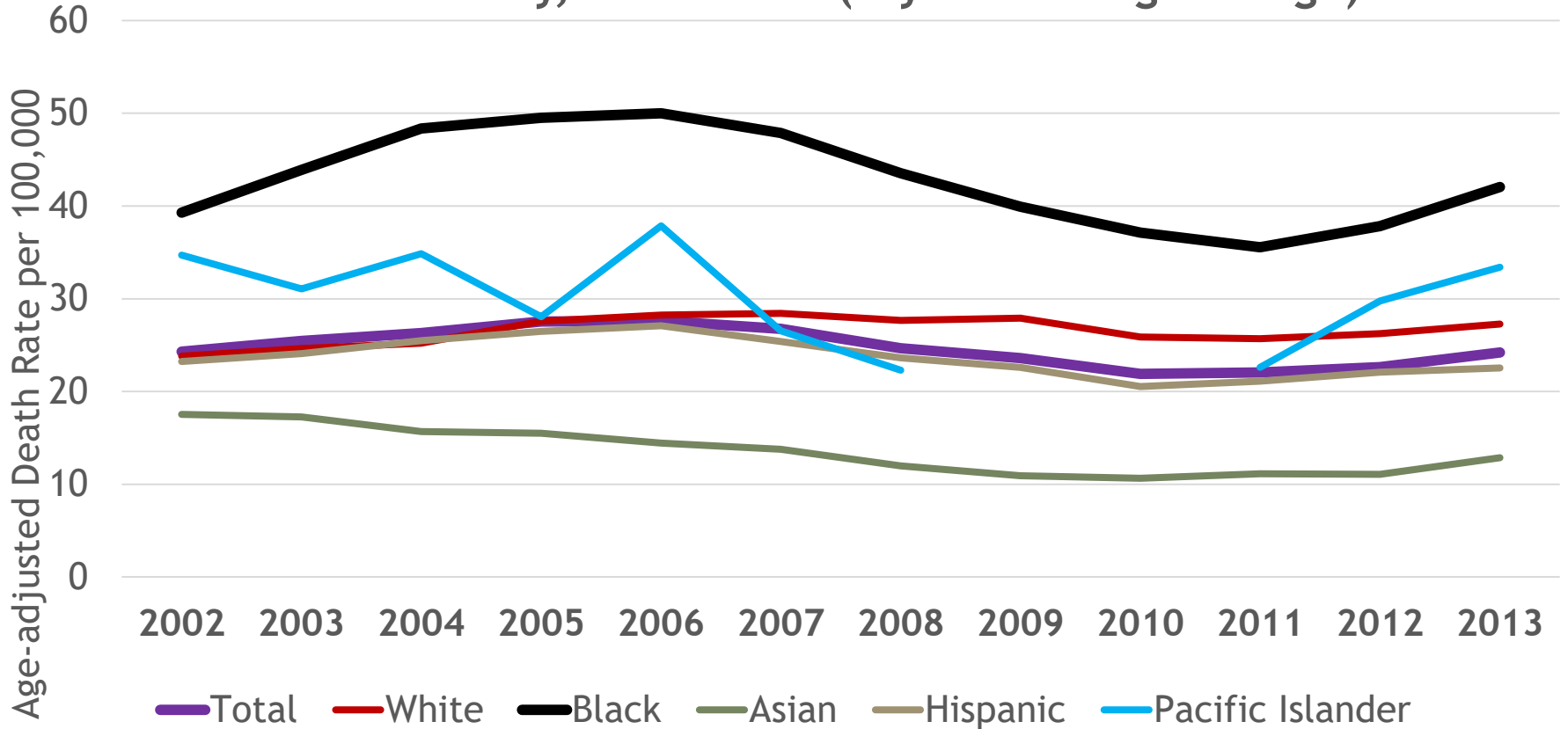
Percentage Low Birth Weight (LBW) and Very Low Birth Weight (VLBW) by race/ethnicity, 2014



Infant Mortality Rate by Race/Ethnicity, 2000-2014

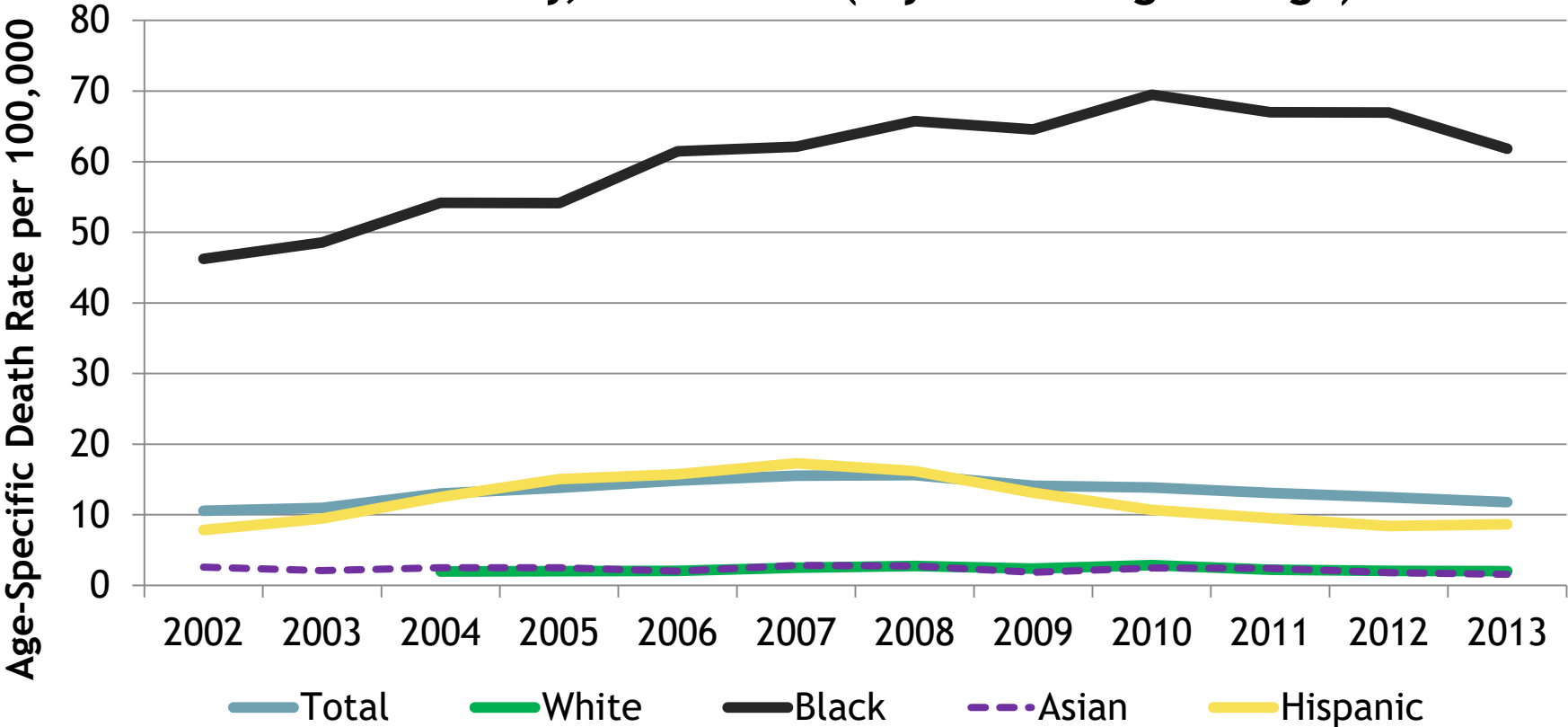


Unintentional Injury Mortality Trend by Race/Ethnicity Alameda County, 2000-2015 (5-year Rolling Average)



Source: CAPE, with data from Alameda County Vital Statistics files, 2000-2015

Homicide Trend among 5 to 24 Years Old by Race/Ethnicity Alameda County, 2000-2015 (5-year Rolling Average)



Source: CAPE, with data from Alameda County Vital Statistics files, 2000-2015

Solutions



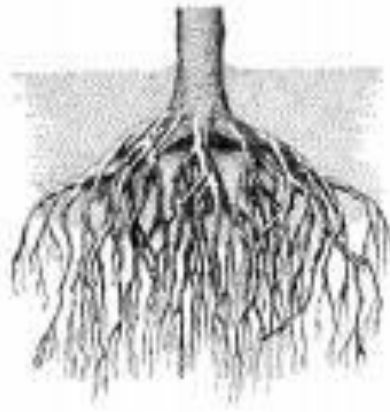
- Address Root Causes
- Target prevention/early intervention efforts to address leading causes of death
- Access to high quality health care

UNDERSTAND AND ADDRESS ROOT CAUSES OF HEALTH INEQUITIES

Roots Causes

High Quality Education

Clean Air, Water and
Soil



Safe, Clean and
Affordable Housing

Safe Places to Play, Live
& Work

Employment and
Community Economic
Development

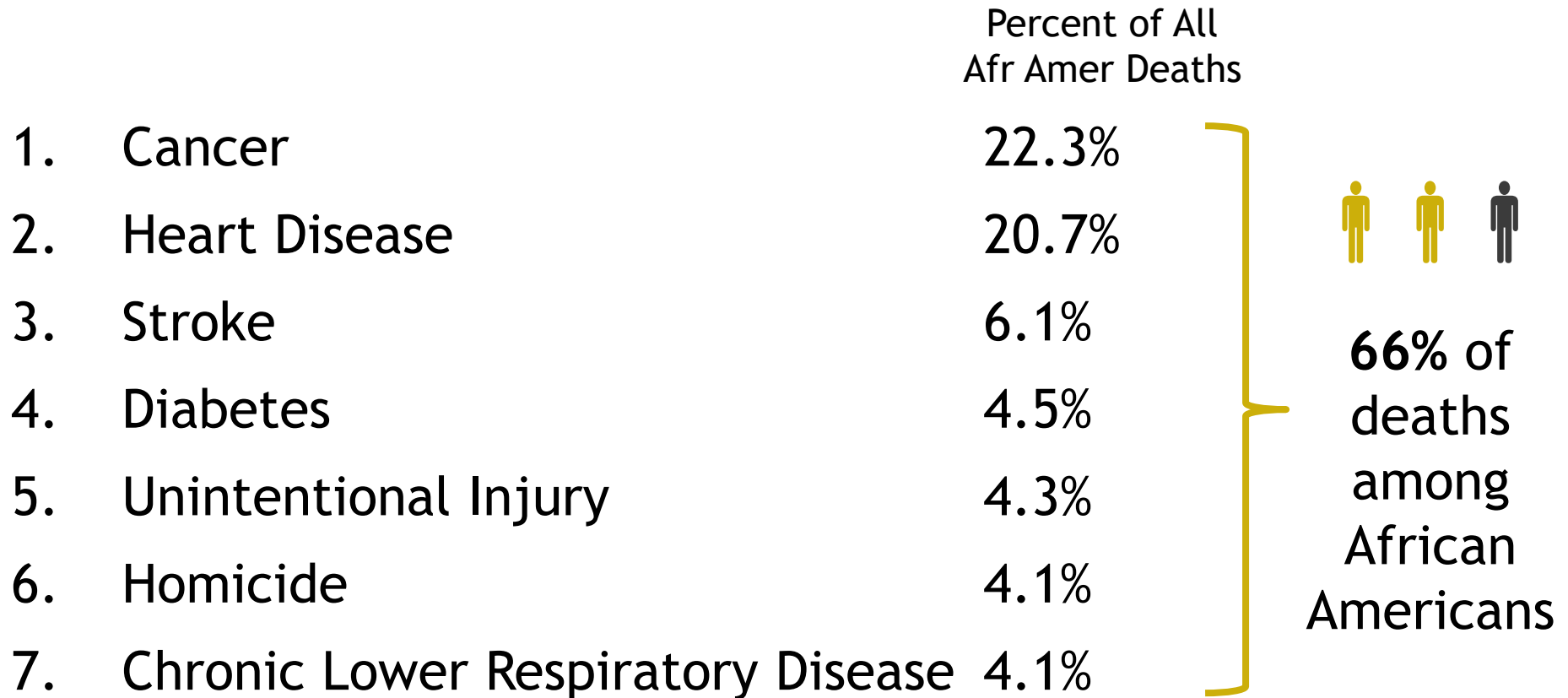
CLOSE SOCIO-ECONOMIC GAPS

Poverty, Employment, & Education Indicators Alameda County, 2013-2014

	Black	White
Poverty	24%	8%
Unemployment	13%	5%
High School Drop-Out		
Males	23%	7%
Females	19%	4%

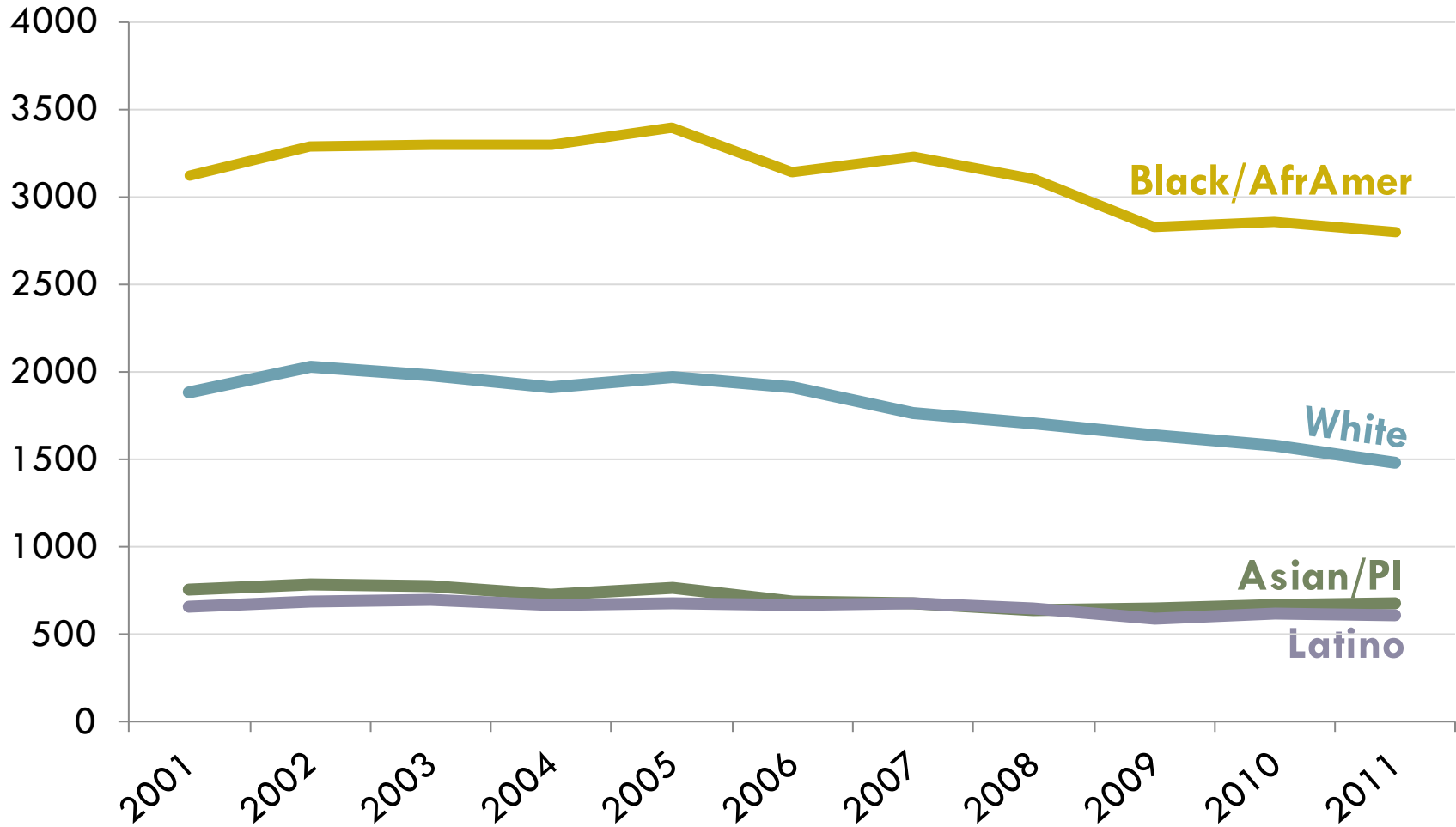
TARGET PREVENTION EFFORTS TO ADDRESS LEADING CAUSES OF DEATH

Leading Causes of Death among African Americans Alameda County, 2012-2014



EXPAND ACCESS TO QUALITY HEALTHCARE

Total Preventable Hospitalizations by Race Adults, Alameda County, 2001-2011



Multi-Sectoral Partnerships and Action

 <p>Land Use</p>	 <p>Economics</p>	 <p>Childcare</p>	 <p>Medical Care</p>		
 <p>Mental Health</p>	 <p>Jobs</p>	 <p>Clean Air</p>	 <p>Transportation</p>		
 <p>Healthy Food</p>	 <p>Parks and Activities</p>	 <p>We each have a role in achieving health equity</p>		 <p>Safe Neighborhoods</p>	 <p>Criminal Justice</p>
 <p>Education</p>	 <p>Housing</p>	 <p>Residents</p>	 <p>Policy Makers</p>	 <p>Criminal Justice</p>	 <p>Transportation</p>
 <p>Land Use</p>	 <p>Economics</p>	 <p>Childcare</p>	 <p>Medical Care</p>		

For More Information

Kimi Watkins-Tartt

Deputy Director

Alameda County Public Health Department

Kimi.Watkins-Tartt@acgov.org

